



MERSEYSIDE WASTE DISPOSAL AUTHORITY

MWDA PERFORMANCE REPORT

Quarter 1 2010-2011

Section 1 – Summary

Section 2 – Commentary

Section 3 – Detailed Analysis

Section 4 – Special Focus Report

The following report presents the Authority's performance against its Corporate Plan. A full copy of the Corporate Plan is available at www.merseysidewda.gov.uk or upon request

Improvement Target Corporate Aim: Operations	Target 2010/11	Performance Update As at April 2010	Is the performance on target?
To recycle or compost municipal waste	33%	33.59%	
<i>Further examples provided here</i>			
<i>Further examples provided here</i>			
Improvement Target Corporate Aim: Resources	Target 2010/11	Performance Update	Is the performance on target?
To manage sickness absence to within the top quartile of local authorities by 2010.	Upper Quartile for the Public Sector is 7.1 days	2.66 days (exc. long term sick)	
<i>Further examples provided here.</i>			
<i>Further examples provided here</i>			
Improvement Target Corporate Aim: Partnership	Target 2010/11	Performance Update	Is the performance on target?
To reduce residual waste across Merseyside to 744kg per household (NI 191) and 141kg at Household Waste Recycling Centres (HWRCs) by 2011.	NI191 HH 744kg NI191 HWRC's 141kg	740.26kg 135.19kg	

Section 2 - Commentary**1. Corporate Aim 1- Operations**

To deliver value for money services and provide quality waste facilities which meet the current and future needs of the Merseyside and Halton Waste Partnership and deliver continuous improvement in performance.

“Here we would get a comment from a Manager to explain briefly what has happened and if the performance is on target/not on target. If the performance is not on target there will be further commentary explaining what will change to try and ensure future improvements.”

2. Corporate Aim 2 - Resources

To manage the Authority in accordance with the principles of the Authority’s Code of Corporate Governance.

“Here we would get a comment from a Manager to explain briefly what has happened and if the performance is on target/not on target. If the performance is not on target there will be further commentary explaining what will change to try and ensure future improvements.”

3. Corporate Aim 3 Partnership

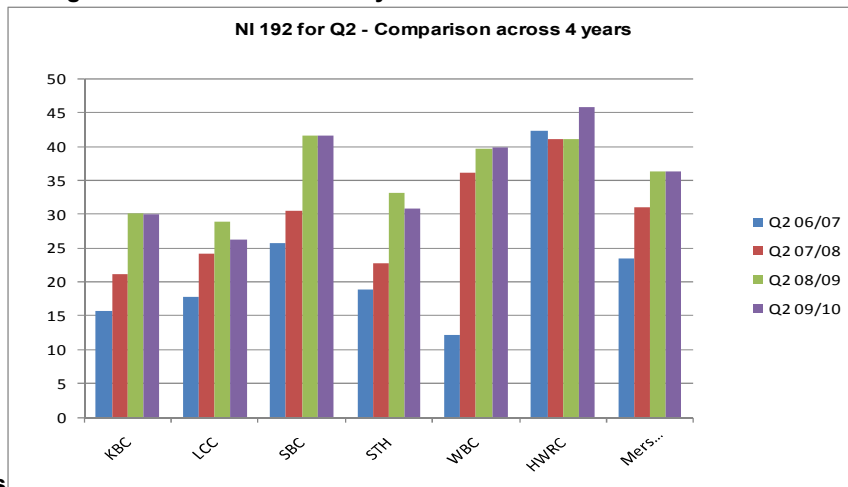
To lead the development and implementation of a Joint Municipal Waste Management Strategy for Merseyside.

“Here we would get a comment from a Manager to explain briefly what has happened and if the performance is on target/not on target. If the performance is not on target there will be further commentary explaining what will change to try and ensure future improvements.”

Section 3 – Detailed Analysis

1. Corporate Aim 1- Operations

Figure 1: Percentage of Household Waste recycled – Quarter 2

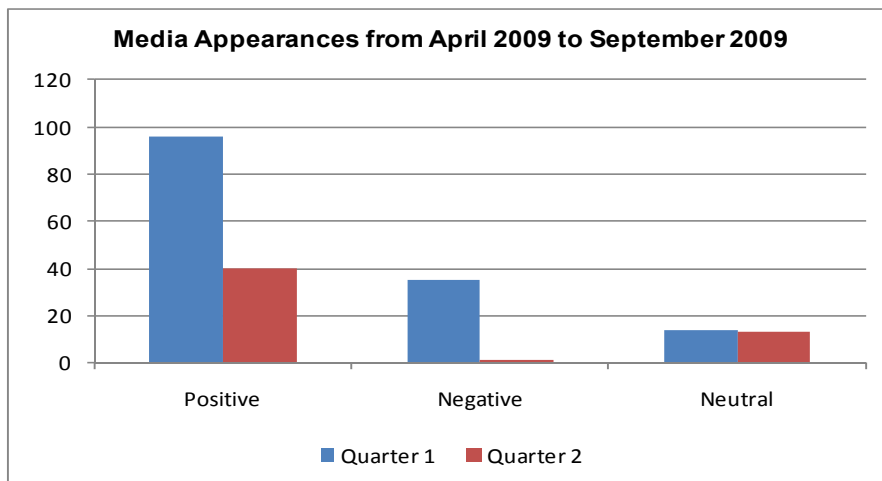


comparisons

Further graphs and commentary would be shown here that relate to Corporate Aim 1 - Operations

2. Corporate Aim 2 – Resources

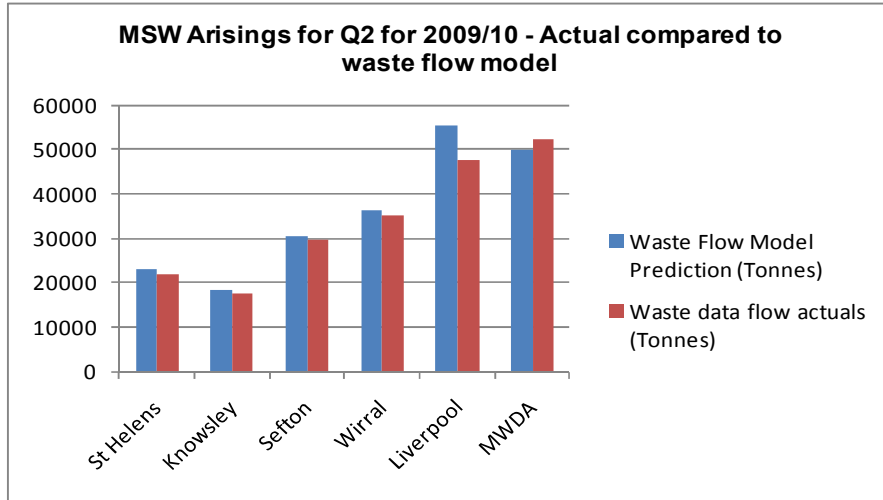
Figure 2: Media Appearances for Quarter 1 & Quarter 2 for 2009/10



Further graphs and commentary would be shown here that relate to Corporate Aim 2 – Resources

3. Corporate Aim 3 Partnership

Figure 3: Municipal Solid Waste (MSW) Arisings – Quarter 2 comparison across the District Councils



Further graphs and commentary would be shown here that relate to Corporate Aim 3 - Partnership

Conclusions

Here conclusions would be provided on the findings of the 3 corporate aims and a summary of the Quarter

Section 4 – Special Focus Report

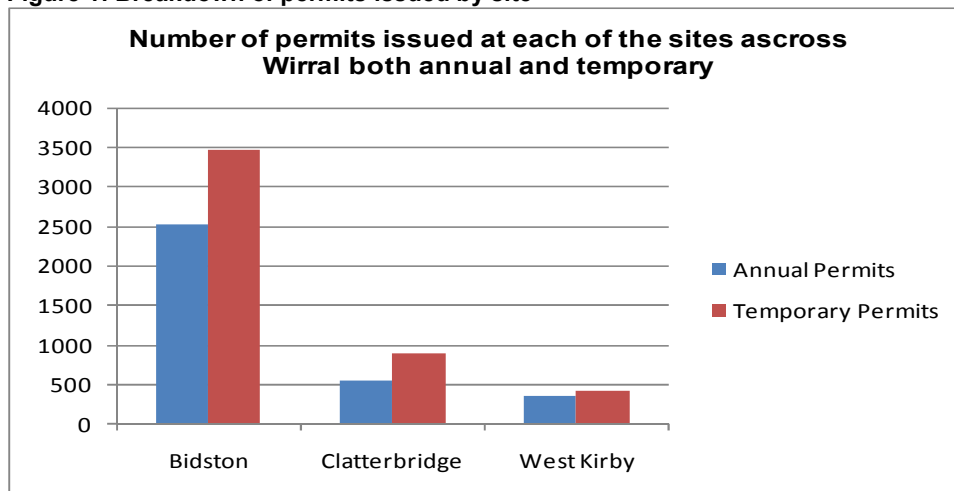
Special Focus Report – Permit Scheme

A brief description would be provided here to explain the reason for the Special Focus Report

Table 1: Number of permit applications per month since pilot started

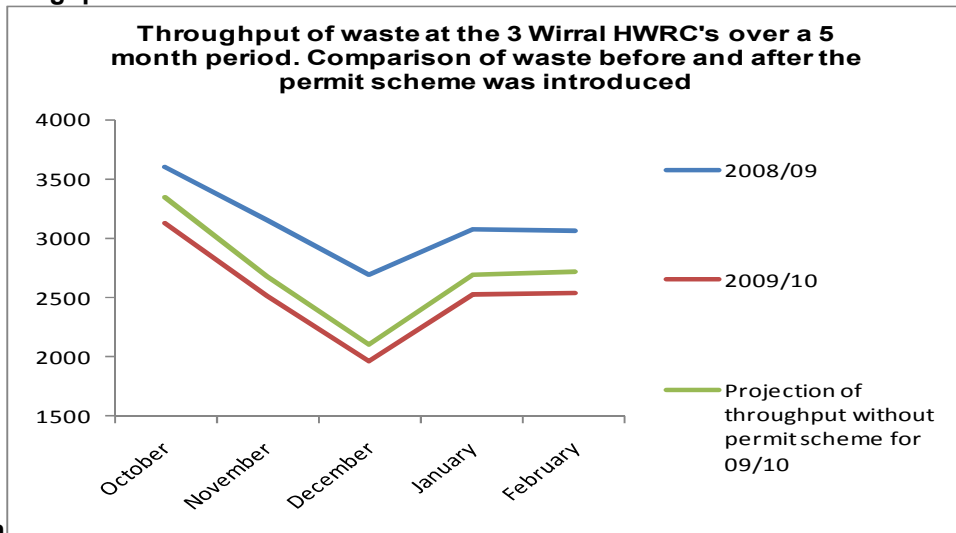
Month	Number of permit applications
September 2009	2318
October 2009	1963
November 2009	1484
December 2009	694
January 2010	1008
February 2010	921

Figure 1: Breakdown of permits issued by site



- *Commentary on the above graph would be provided here*

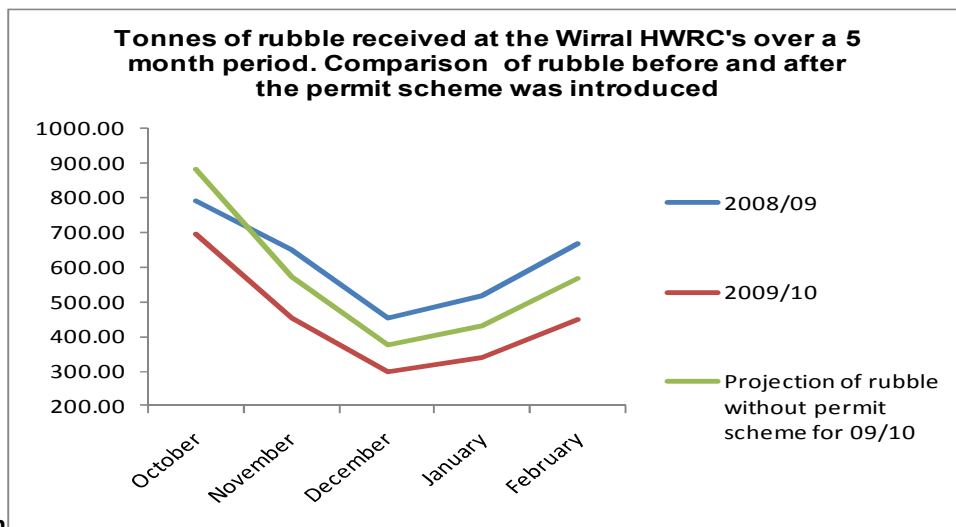
Figure 2: Throughput of waste



comparison

- *Commentary on the above graph would be provided here*

Figure 3: Tonnes of rubble



comparison

- *Commentary on the above graph would be provided here*

Conclusions

A short paragraph would be provided to detail the findings of the report and provide any recommendations for future analysis/reports

**For further information or to provide feedback please contact:
Jane Nolan on 0151 255 2537
or email jane.nolan@merseysidewda.gov.uk**