

A person is shown from the side, wearing a grey apron, pouring vegetable scraps from a light green plate into a green compost bin. The scraps include broccoli florets, carrot slices, and onion peels. The bin is placed on a wooden surface. In the background, there is a wooden bowl filled with various fruits like apples and oranges, and a small glass jar containing dark seeds or spices. The overall scene is brightly lit, suggesting a kitchen environment.

MRWA KITCHEN WASTE OPTIONS

21/06/24

Household Kitchen Waste Options

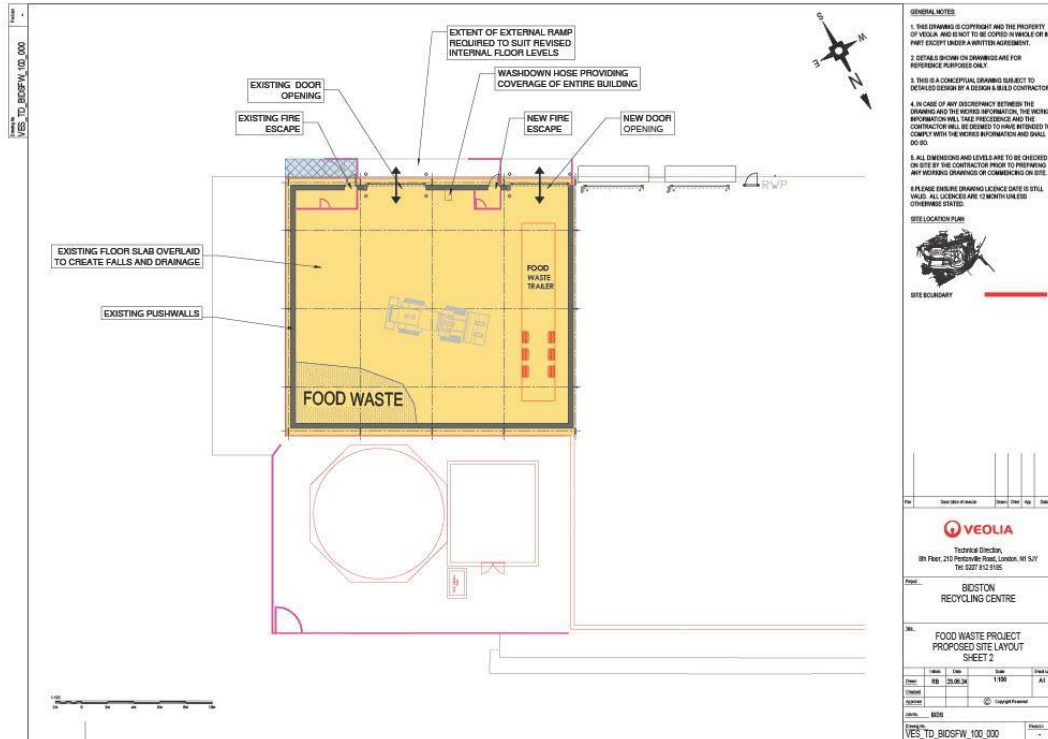
Veolia Facilities Option:

- Floor tip at all four transfer stations
 - Full flexibility for Council Collection Services
 - Full flexibility for disposal arrangements (allows loading trailers and/or containers)



Bidston Option

Redevelop the IVC building for Kitchen Waste acceptance

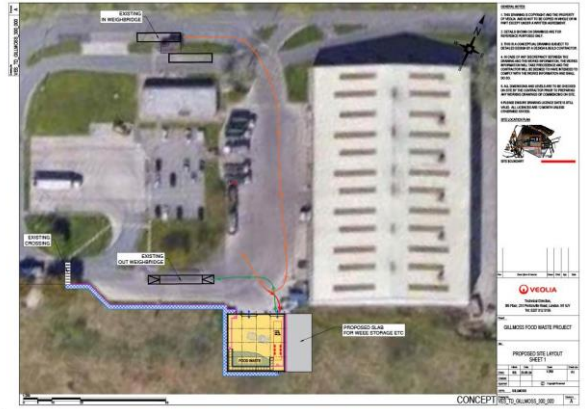
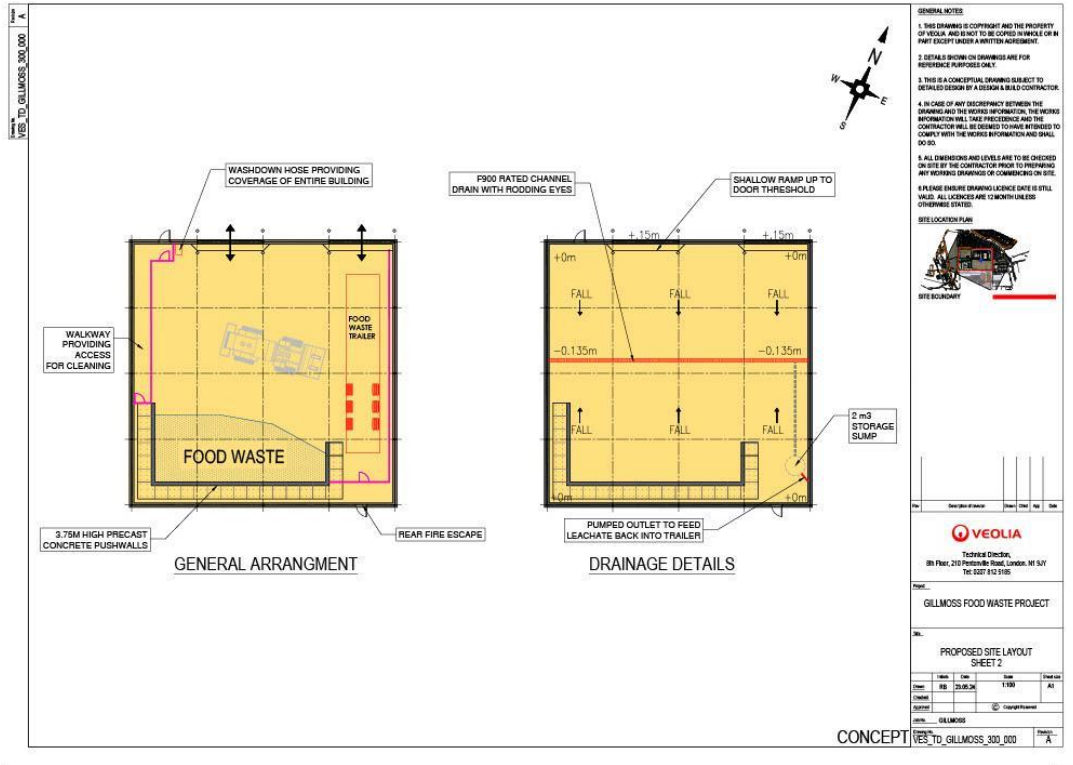


Key modifications:

- Raise concrete floor
- New Artic access door
- Modify pushwalls
- Mist air system
- Biosecure

Gillmoss Option

New Kitchen Waste building on land next to the transfer station

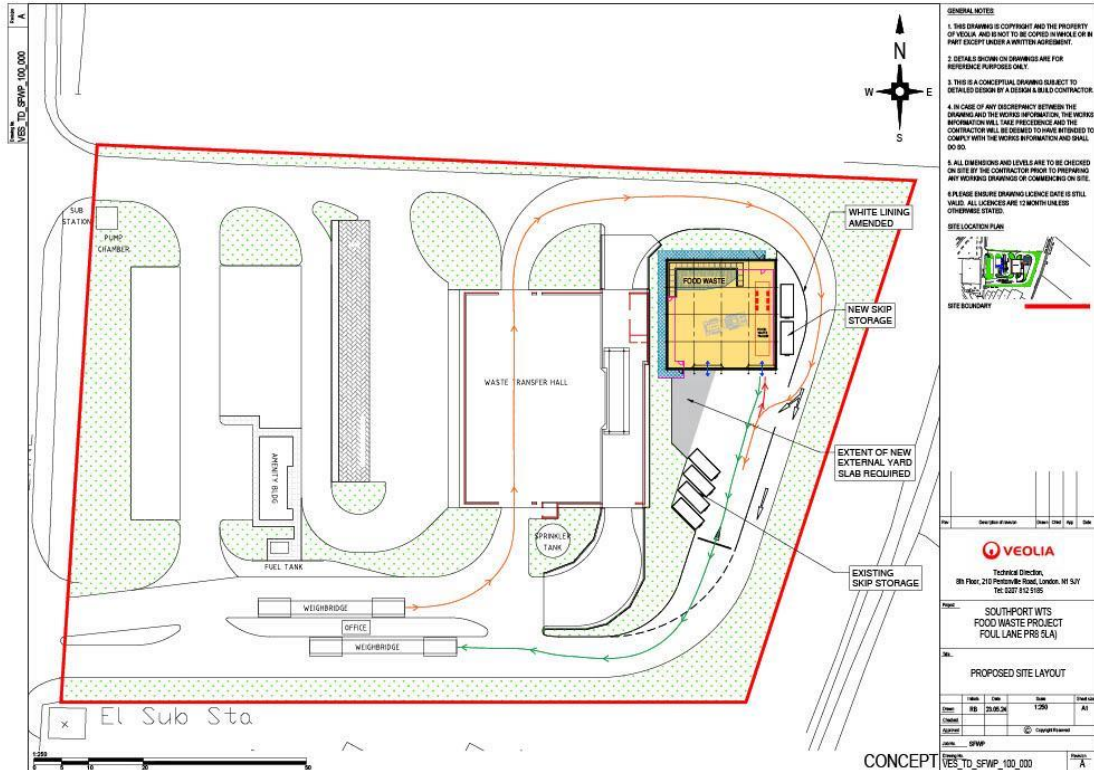


Key items:

- New Tentiq building
- Concrete foundations
- Concrete floor
- Pushwalls
- Power/lighting/fire detection
- Mist air system
- Biosecure
- New WEEE storage slab

Southport Option

New food waste building behind the transfer station



Key items:

- New Tentiq building
- Piled concrete foundations
- Concrete floor
- Extended concrete slab
- Pushwalls
- Power/lighting/fire detection
- Mist air system
- Biosecure

Huyton Options

Option 1 (of 3) - New building at Huyton HWRC

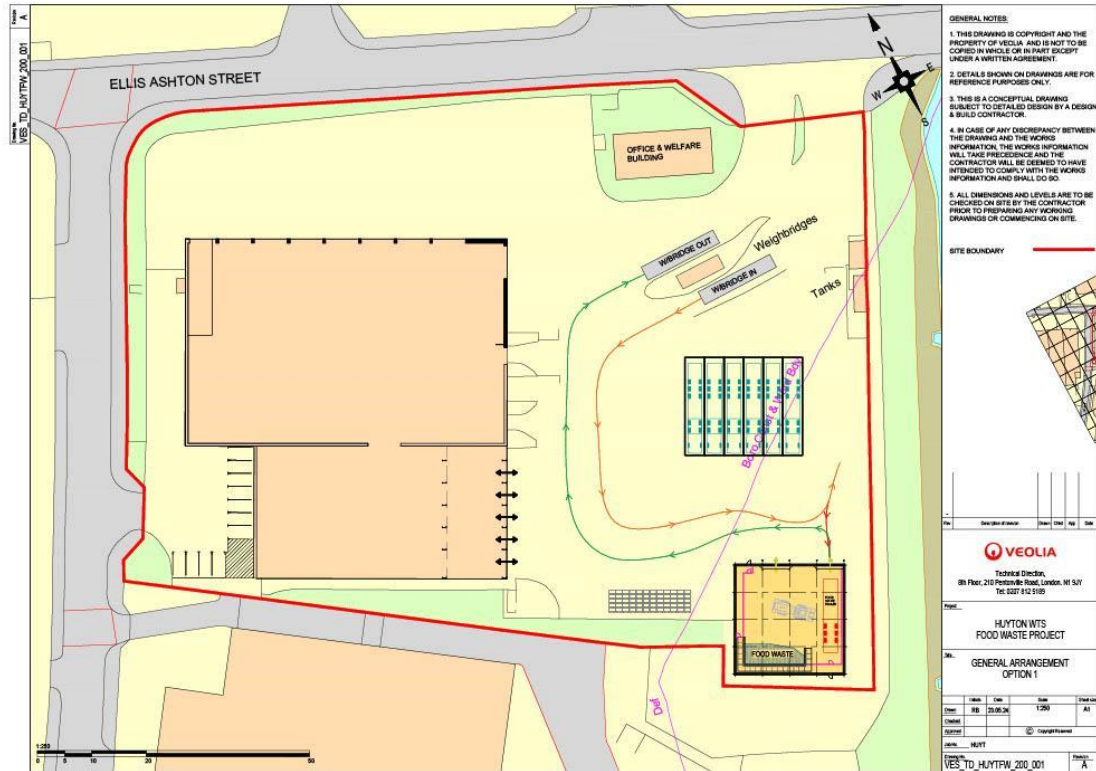


Key items:

- New Tentiq building
- Concrete foundations
- Concrete floor
- Pushwalls
- Power/lighting/fire detection
- Mist air system
- Biosecure
- New surface mounted weighbridge and Kiosk

Huyton Options

Option 2 (of 3) - New building where the existing maintenance shed currently sits



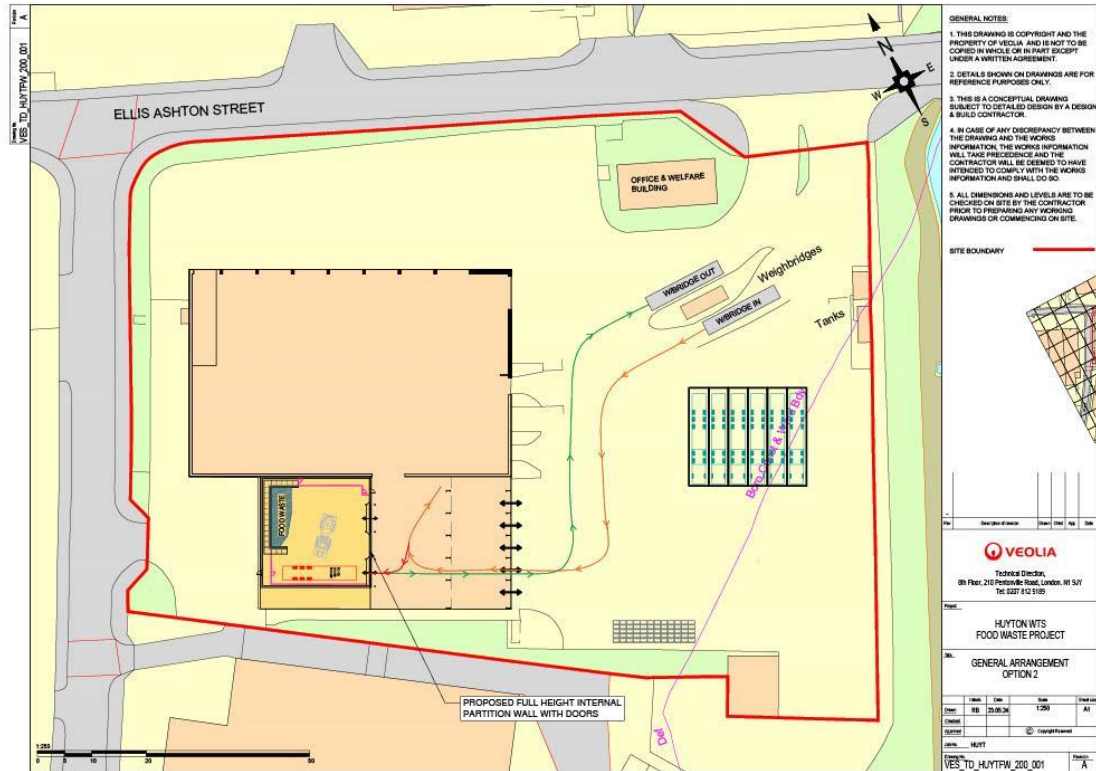
- GENERAL NOTES:
1. THIS DRAWING IS COPYRIGHT AND THE PROPERTY OF VEOLIA AND IS NOT TO BE COPIED IN WHOLE OR IN PART EXCEPT UNDER A WRITTEN AGREEMENT.
 2. DETAILS SHOWN ON DRAWINGS ARE FOR REFERENCE PURPOSES ONLY.
 3. THIS IS A CONCEPTUAL DRAWING SUBJECT TO DETAILED DESIGN BY A DESIGN & BUILD CONTRACTOR.
 4. IN CASE OF ANY DISCREPANCY BETWEEN THE DRAWING AND THE WORKS INFORMATION, THE WORKS INFORMATION WILL TAKE PRECEDENCE AND THE CONTRACTOR SHALL BE DEEMED TO HAVE INTENDED TO COMPLY WITH THE WORKS INFORMATION AND SHALL DO SO.
 5. ALL DIMENSIONS AND LEVELS ARE TO BE CHECKED ON SITE BY THE CONTRACTOR PRIOR TO PREPARING ANY WORKING DRAWINGS OR COMMENCING ON SITE.

Key items:

- New Tentiq building
- Concrete foundations
- Concrete floor
- Pushwalls
- Power/lighting/fire detection
- Mist air system
- Biosecure
- Demolish/remove existing fitters shed
- Proposal does not include costs to relocate fitters at South Sefton Bulking shed or elsewhere tbc

Huyton Options

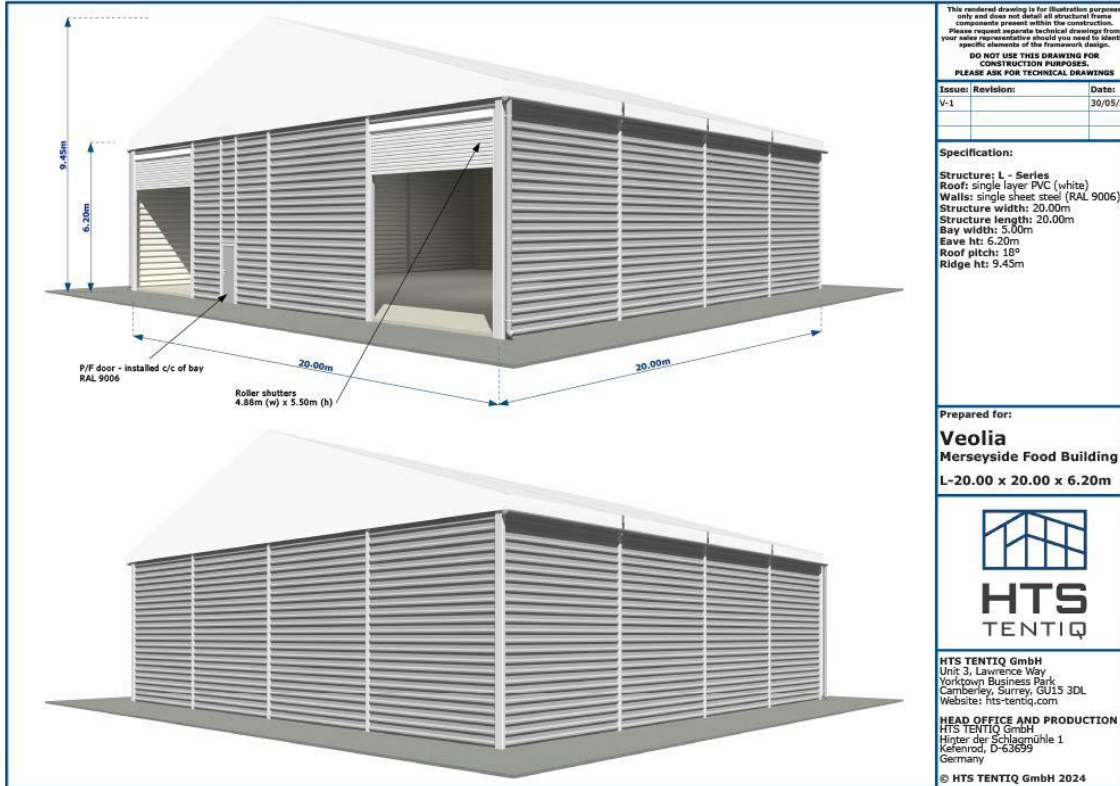
Option 3 (of 3) - Convert the annex building to accept Kitchen Waste



Key items:

- New Tentiq building inside Annexe Building
- Concrete floor
- Pushwalls
- Power/lighting/fire detection
- Mist air system
- Biosecure
- Infill baler pit
- Proposal does not include costs to relocate Baler at Sefton Bulking shed or elsewhere tbc

Schematic of Tentiq Superstructure



This remained drawing is for illustration purposes only and does not detail all structural frames components present within the construction. Please request separate technical drawings from your sales representative should you need to identify specific elements of the framework design. **DO NOT USE THIS DRAWING FOR CONSTRUCTION PURPOSES. PLEASE ASK FOR TECHNICAL DRAWINGS.**

Issue:	Revision:	Date:
V-1		30/05/24

Specification:

Structure: L - Series
 Roof: single layer PVC (white)
 Walls: single sheet steel (RAL 9006)
 Structure width: 20.00m
 Structure length: 20.00m
 Bay width: 5.00m
 Eave ht: 6.20m
 Roof pitch: 18°
 Ridge ht: 9.45m

Prepared for:
Veolia
 Merseyside Food Building
 L-20.00 x 20.00 x 6.20m



HTS TENTIQ GmbH
 Unit 3, Lawrence Way
 Yorktown Business Park
 Camberley, Surrey, GU15 3DL
 Website: hts-tentiq.com

HEAD OFFICE AND PRODUCTION
 HTS TENTIQ GmbH
 Hinter der Schlagmühle 1
 Kellenrod, D-63699
 Germany

© HTS TENTIQ GmbH 2024