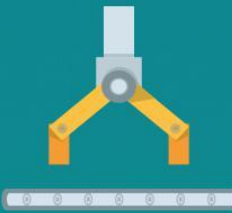


# Merseyside Recycling and Waste Authority

# Seasonal Update - Summer 2016

## Waste Management Contract - 2015/16



93%

Recycled at our Materials Recovery Facilities



67%

Material recycled at Recycling Centres

79%

Material diverted from landfill at Sefton Meadows Recycling Centre - the best performing Centre in 2015/16

## - More MRWA in numbers -

2



Awards

Old Swan Recycling Centre

4



Months

Until commissioning completed for Energy from Waste facility

1500



Recycling bags

For Liverpool L4 residents

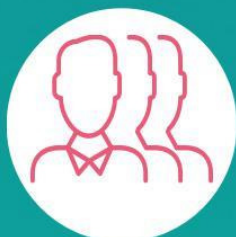
30,000



Visitors

To our Education Centres

## Community Fund 2015/16



680 tonnes of material diverted from landfill

763 tonnes reduction in CO2e emissions

72 full time equivalent jobs created or safeguarded

253 participating volunteers

## Resource Recovery Contract

Work is progressing well on the £1bn Resource Recovery Contract (RRC) with construction of our sites in Knowsley and Wilton getting closer to completion. The contract will see almost all of Merseyside and Halton's residual (non-recycled 'black bag') household waste diverted from landfill via our contractor SUEZ.

At the Wilton Energy from Waste facility (located just outside of Middlesbrough – *pictured below*) the site continues to be commissioned ready to accept waste for the hot commissioning phase. It is expected that the facilities will become fully operational in October 2016.



The majority of works are complete at the Kirkby Rail Transfer Loading Station (located on the Knowsley Industrial Estate). The site has taken delivery of essential equipment such as crane grabs and containers, and all the Container Handling Units which will load containers onto the train for transport to Wilton.

The Resource Recovery Contract will create energy, recycle some materials and minimise our reliance on expensive landfill, bringing environmental and financial benefits for Merseyside and Halton.

## Top accolade for Old Swan Recycling Centre

The Authority's Old Swan recycling facility has received a top environmental industry accolade.

Opened in December 2015, MRWA worked with its contractors Cheetham Hill Construction to achieve a top rating as part of CEEQUAL which is a sustainability assessment, rating and awards scheme for civil engineering. The Authority has been awarded an 'Excellent' rating of 86.5% as part of the CEEQUAL assessment, making the Old Swan Household Waste Recycling Centre (HWRC) one of the greenest and most sustainable in the country.

The CEEQUAL assessment takes into account a number of factors when judging the new centre and these include: Ecology and Biodiversity, People and Community, Land use and Landscape, and Energy and Carbon.



Cllr Graham Morgan, MRWA Chairperson said: "The Old Swan Recycling Centre is the fourth site that the Authority has developed that has been given a CEEQUAL award, which makes us extremely proud of the work we're doing and the positive impact we're having on the local community and environment."

Perry Shard, from CEEQUAL said: "There are features of this project which are usually only seen on much larger projects - there has been 100% use of all demolition materials within the new construction, installation of rainwater harvesting and the ability of at least 95% of the site and its infrastructure to be dismantled and recycled or reused at the end of Centre's operational life."

Kirkby, Huyton and Ravenhead Household Waste Recycling Centres have also achieved the CEEQUAL award.

The Old Swan HWRC also recently picked up the Corporate Social Responsibility Award at this year's Liverpool Echo Environment Awards.

## Trading in Recycling

MRWA has teamed up with Veolia to offer a trade waste recycling scheme for business, industrial and commercial waste.

Our Trade Recycling Centres at Bidston and Huyton offer a 'pay by the load' recycling and waste disposal service to businesses and traders.

Once registered all a business needs to do is sort their waste and recyclable items and visit the Centre to deposit the items in the marked containers. Disposal costs are based on the size of vehicle and the materials looking to be disposed. There are two Trade Waste Recycling Centres on Merseyside – Bidston and Huyton.

Veolia have recently embarked on some promotional activity for the scheme, including a mail-shot and leafleting, advertising in the local press, billboards and on petrol pump handles. For more information see:

<http://www.merseysidewda.gov.uk/waste-recycling/trade-waste/>

## Anfield and Walton recycling success

A pilot scheme between MRWA and Liverpool Council which saw 1500 terraced house in Liverpool's County ward receive new blue recycling bags and black storage bins has seen encouraging results.

The bags are used to store recyclable items, and the black bins (which are to be kept in backyards) used to help store domestic rubbish that can't be recycled.

The project was launched in November 2015 and since has seen a 20% increase in the amount of material sent for recycling. There has also been an 11% increase in the quality of materials presented for recycling following an awareness campaign in the area.

**OLD SWAN & HUYTON  
TRADE  
WASTE  
RECYCLING SERVICE**

Offering convenient **pay by the load**, recycling and waste **drop off** centres for traders and businesses.

**Contact us for more information**  
Old Swan HWRC, Cheadle Avenue, Old Swan, Liverpool, L13 3AF  
Huyton HWRC, Wilson Road, Huyton, Knowsley, L36 6AD  
Open: 9am-3pm, Monday-Friday  
Tel: 0203 567 4200  
Website: [www.veolia.co.uk/merseyside-and-halton](http://www.veolia.co.uk/merseyside-and-halton)

**VEOLIA**



*(Pictured are Councillors Woodhouse and Roy Gladden with Liverpool crew members and the recycling bags and storage bin)*

## 30,000 Visitors Discover Recycling

Our Recycling Discovery Centres have recently celebrated their 30,000<sup>th</sup> visitor with a group of Beavers and students from a college and primary school.

The recycling educational centres, based in Liverpool and Wirral, were delighted to reach the 30,000 visitor milestone. Veolia and MRWA opened the doors on waste and recycling to Merseyside residents back in 2009, so they could see what happens to their recycling after it has been collected from homes across the region.

Students who visited on the special day from Knowsley Community College and St Mary's Primary School, West Derby joined in with the celebrations, followed by a lively group from 17th Fairfield Beavers in the evening.



*Pupils from St Mary's Primary School, West Derby*

The Recycling Discovery Centres offer a broad range of educational sessions and show visitors how material from recycling bins in Wirral, Liverpool, Knowsley, Halton and parts of Sefton is sorted and separated at the Materials Recovery Facilities. Members of the public are treated to a tour of the facility where they can see the process in full and how recycling is processed using various techniques after it has been collected by district council wagons.

**Kirsty Martin, Education Officer at Veolia, said:** "It was great to have a full day celebrating with the three diverse groups. We're looking forward to another busy few months and our community open days in the summer!"

## Beer, Bikes and Buffet –



## A MRWA marketplace at IFB 2016

MRWA will be working with Groundwork Liverpool to deliver a circular economy promotional event at this year's Fringe Festival - part of the International Festival of Business (IFB) 2016.

Taking place at Constellations (in the creative Baltic Triangle district – *pictured below*) on Wednesday 22<sup>nd</sup> June, the interactive marketplace will showcase business benefits of re-use and waste prevention. There will be workshops, demonstrations, produce and products from a wide range of local businesses, social enterprises and community organisations throughout the day including:



- food producers: using leftovers to create brand new dishes whilst saving money and resources;
- microbreweries: small scale local independents, beers characterized by quality and flavour brewed, sold and drunk in the same city;
- furniture upcyclers: creating something new from something old; nothing wasted or sent to landfill;
- bicycle maintenance and refurbishment: don't send for scrap, old bicycles can have a new lease of life helping cut congestion, carbon and improving healthy lifestyles;
- Aquaponics: less land, less water and less energy – how urban farming helps feed our cities.



## MRWA Community Fund 2015/16

The ten projects from our 2015/16 Community Fund have come to an end and have seen everything from repaired bicycles, upcycled furniture, re-used textiles and electrical repair (and much more) help upskill the community and provide the tools to save money, prevent waste and reuse resources.

Our Fund partners have delivered a wide range of activities which have utilised waste resources, nurtured the growth of a circular economy knowledge and skills base in the city region, and helped raise awareness of waste as a resource.

All ten projects were successfully delivered and together have achieved the following:

- 680 tonnes diverted from landfill
- 763 tonnes reduction in CO2e emissions
- 71 full time equivalent jobs created or safeguarded
- £68,000 financial savings in landfill costs
- 24,256 individuals directly engaged in the projects
- 279,530 further people reached through engagement with families, community groups, schools, businesses and wider social media
- 253 volunteers participated in the projects contributing 61,126 voluntary hours.

These projects will continue to deliver benefits beyond 2015-16 through their ongoing impact on behavioural change and the continuation of activities beyond Community Fund support.



**STOP PRESS - we have just chosen the projects for the 2016/17 Community Fund. [See this link for more information.](#)**

## Outcomes from MRWA Service Delivery Plan 2015/16

The following is a summary of all the objectives we set ourselves at the beginning of 2015/16 together with an indicator on performance. Some of our major achievements include the major build programme to deliver the facilities for the Resource Recovery Contract which is now in the commissioning phase. We have worked with our waste contractors to improve our environmental performance with more waste recycled and less waste disposed of in landfill.

A number of projects were not achieved within the expected timeframes and can be summarised as follows:

- SDP Ref 1.6.1: A number of interim contracts were in place to divert waste from landfill and whilst this did achieve significant diversion of waste, there was a minor shortfall in the total amount of waste delivered that could be accepted under the agreement with GMWDA due to operational factors.
- SDP Ref 2.1.1: The planned review of the Joint Recycling and Waste Management Strategy has been postponed to await the outcome of the Strategic Review currently being led by the Merseyside and Halton councils is known.
- SDP Ref 3.7.3: A framework for the development fund held by Mersey Waste Holdings Limited was planned to be developed in 2015/16, however, this too has been postponed pending the outcome of the Strategic Review.

A full report on our outcomes will be published later this year in an Annual Report, or if you would like to see what we have planned in 2016/17 [read our latest Service Delivery Plan](#).

## Waste Management and Recycling Contract - Performance Update

For 2015/16 year-to-date we have received 172,000 tonnes of waste at the 16 Household Waste Recycling Centres across Merseyside and Halton, which are operated by our contractor Veolia. **This is an increase of 10,000t or 6.2% tonnes against last year.** 67.1% of HWRC material was recycled for 2015/16 and 74% diverted (including rubble). This is excellent over-performance against a 52.91% recycling target. Old Swan HWRC has achieved a recycling performance of 72% having received 900t for its first three months.

In particular, **Sefton Meadows Recycling Centre has proven itself as Merseyside's best performing Recycling Centre** with 79% of the material delivered through its doors diverted from landfill for 2015/16. It also was the best performing facility in terms of the amount of material recycled over the year at 73.2%.

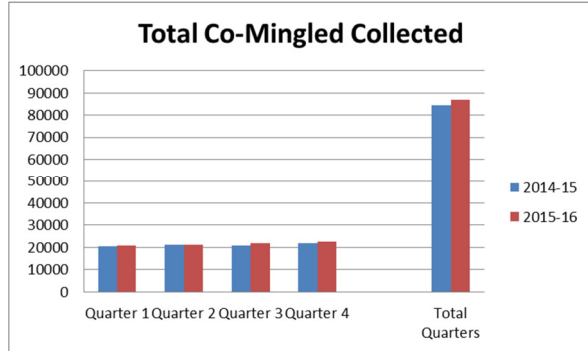
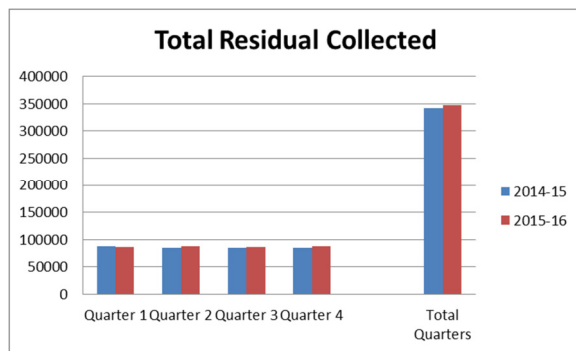
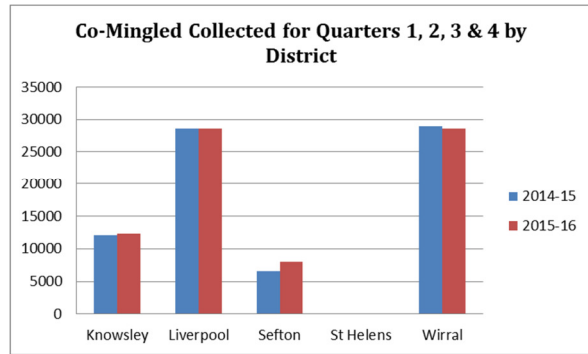
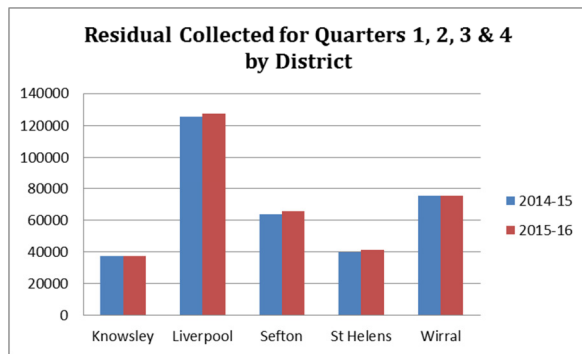
## Materials Recovery Facilities - Service Performance Update

For 2015/16, we have received 86,800 tonnes of co-mingled waste from various Merseyside councils and Halton. The material is processed at our two Materials Recovery Facilities (MRFs) at Bidston and Gillmoss. 93% of the materials were recycled for this period. This is an excellent over-performance against a target of 91%.



## Quarter Waste Statistics by Merseyside District (tonnes)

Knowsley, Liverpool, and Wirral continue to deliver Residual (i.e. black bin bag) waste and Co-mingled (i.e. recycled) materials to the Authority under the Waste Management and Recycling Contract, whilst Sefton deliver Residual waste and card and plastic recyclates, and St Helens deliver Residual Waste only.



### District Collections

