

## Double prize hopes for Recycling Centres

Two of our newest facilities in the running for top national environmental prizes

The Old Swan and the Ravenhead Household Waste Recycling Centres (HWRCs) have been shortlisted for Outstanding Achievement Awards by CEEQUAL – the sustainability assessment, rating and awards scheme for civil engineering.



The Outstanding Achievement Awards are a significant national achievement. Old Swan (*above*) has been nominated in the *Materials Use* and *Relation with Community and Stakeholders* categories, whilst Ravenhead (*below*) has been shortlisted in the *Ecology and Biodiversity* category.



When building Old Swan HWRC we worked with our contractor Cheetham Hill Construction to achieve a top CEEQUAL rating. We were awarded an 'Excellent' rating of 86.5%, making it one of the greenest and most sustainable in the country. **At the time Perry Shard from CEEQUAL said: "There are features of this project which are usually only seen on much larger projects - there has been 100% use of all demolition materials within the new construction, installation of rainwater harvesting and the ability of at least 95% of the site and its infrastructure to be dismantled and recycled or reused at the end of Centre's operational life."**

Old Swan HWRC has previous winning form when in April it won the Corporate Responsibility Award at the Liverpool Echo Environment Awards. The CEEQUAL results will be announced late November.

---

## Resource Recovery Contract coming on track

### New facilities in Kirkby and Wilton now taking in waste

Construction work has finished at the Wilton and Knowsley facilities which make up our £1bn Resource Recovery Contract. The agreement with our contractor SUEZ will see almost all of Merseyside and Halton's black bin bag household waste diverted from landfill.



The Kirkby Rail Transfer (RTL) and the Wilton International Energy from Waste facility (in Teeside, *pictured above and overleaf*) have passed the cold commissioning phase and are currently undergoing hot commissioning. This has involved running checks and inspections to ensure the facilities are working as they should do, including compactors, weighbridges, the waste crane at Wilton, container handling units and the turnaround time for getting waste in and processed.



Waste which is not required as part of the commissioning process is currently being delivered to landfill - primarily Arpley landfill site. This site has a finite lifespan and is expected to become full in December. While Knowsley RTLS and Wilton EfW have been taking increasing quantities of waste as the commissioning process has progressed, in the event that these facilities are not fully operational by December we are working with our contractors on alternative contingency arrangements.

---

## Clean bill of health for workplace wellbeing

### **MRWA achieves an 'Excellent' rating in five of the standards for its health and wellbeing**

We have been recognised for our work in delivering positive health initiatives to our 30 Liverpool city centre staff after being assessed by Health@Work, the independent charity that looks to work with organisations to help create healthier and happier employees.

The Workplace Wellbeing Charter is an opportunity for employers to demonstrate their commitment to the health and wellbeing of their workforce. There are three levels to the Charter: *Commitment*, *Achievement* and the highest attainable level, *Excellence*. MRWA was assessed and accredited with 'Excellence' in five of eight standards of health & wellbeing: Leadership, Absence Management, Health and Safety, Smoking and Physical Activity.

In the other three standards – Alcohol and Substance Misuse, Mental Health and Healthy Eating – MRWA was accredited with an ‘Achievement’ rating.



Health@Work’s Sean Corcoran said: *“It was great to re-accredit MRWA for the third time showing their commitment to the health & wellbeing of all staff, the evidence provided along with the staff interviews confirmed why MRWA has been able to reach such high levels in each of the standards within the Workplace Wellbeing Charter, five excellent and three achievements were gained which is amazing for the size of the organisation, congratulations and very well done.”*



# Authority and Veolia partnership sees carbon levels at less than zero

## Huge decrease in waste management carbon levels

Our partnership with contractor Veolia has seen levels of carbon from our services dramatically cut over the past seven years.

Newly released figures show that in 2013/14 we saved almost 7,000 tonnes of CO<sub>2</sub>, compared to *producing* 87,332 tonnes of CO<sub>2</sub> in 2009/10.

As part of the Waste Management and Recycling Contract, Veolia undertake an annual assessment of their services using DEFRA's WRATE - Waste and Resources Assessment Tool for the Environmental. The first assessment was completed in 2011 for the year 2009/10.

Carbon reduction performance is mostly based on sending waste to landfill and recycling and all of the emissions associated with those processes, including transportation, facilities and treatment & recovery.



*(Gillmoss Materials Recovery Facility)*

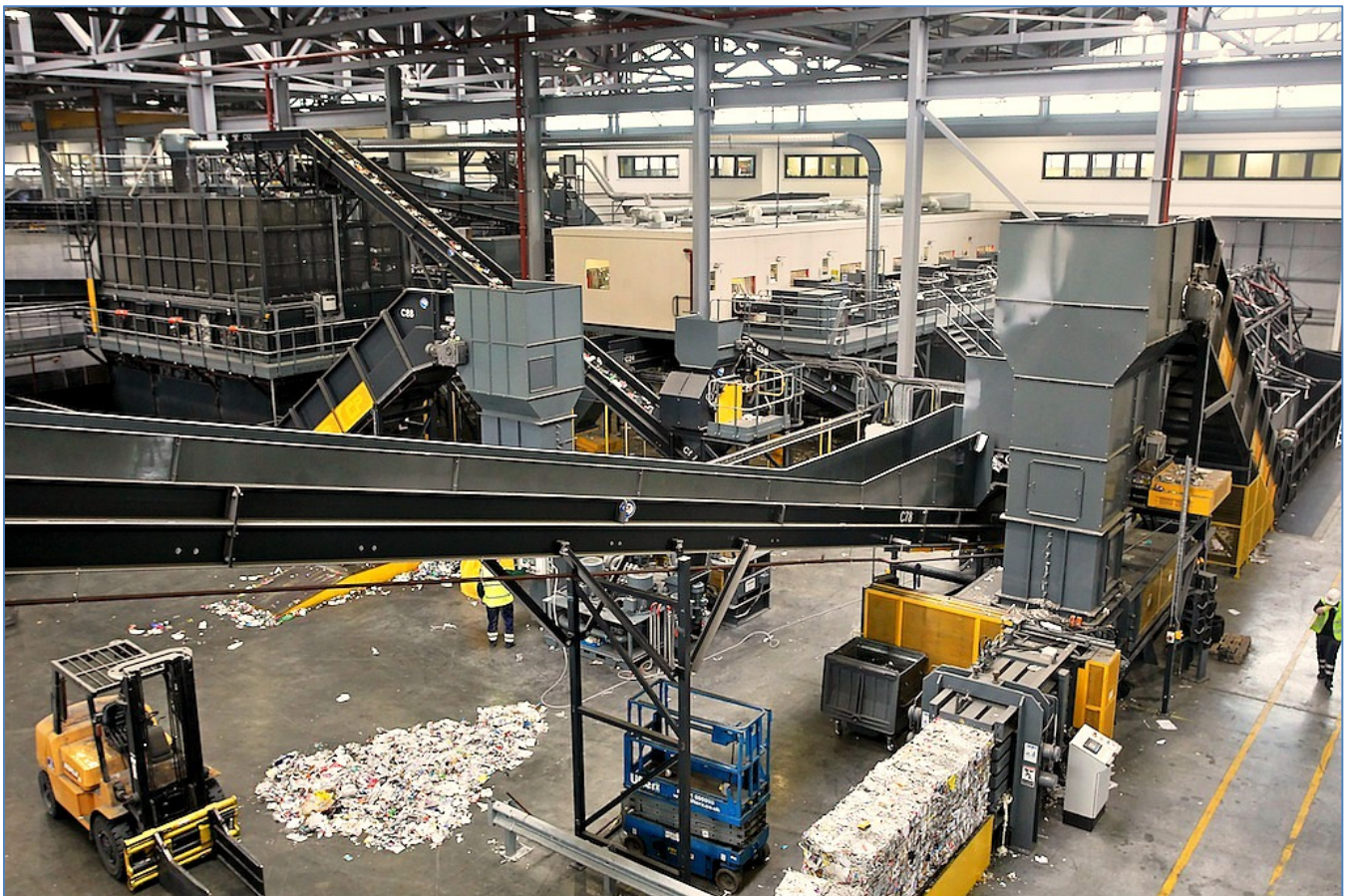
When the Resource Recovery Contract (RRC) is fully operational then all residual waste will have energy value recovered and will provide a renewable energy source to the National Grid. As a result, carbon emissions associated with Merseyside's waste management will become relatively small. The RRC will also significantly reduce the impact of road transportation of waste. It's estimated that during the lifetime of the contract the equivalent of two million tonnes of CO<sub>2</sub> emissions will be prevented.

# Unwanted materials on the increase at MRFs

The amount of unwanted items being delivered to our two Materials Recovery Facilities (MRFs) has increased over the past year.

We operate two MRFs at Bidston and Gillmoss (*pictured below*) which receive Kerbside Collected Recyclable Material from district kerbside collections. From here the materials are sorted into their individual elements, baled and sent onto reprocesses for recycling and re-use.

There is an overall target of a maximum 8% for unwanted material received at these facilities. More recently, the rate of this material received has been increasing, with an average level of over 14% for the period August 2015 to July 2016. The impact of this is that further processing of these unwanted items is necessary at third party facilities and at additional cost.



**Carl Beer, Chief Executive of MRWA, said: “Our Contracts team is always liaising with and talking to our District Council partners and Veolia to make sure we’re processing as much good quality recycling material as possible. The increase in unwanted materials is disappointing but I’m confident we’ll get back to where we need to be. We all need to remind residents of what can and can’t go into their recycling bins, namely paper and cardboard, glass bottles and jars, steel cans and aluminium cans, and plastic bottles.”**

To see our MRF in action have a watch of our We Are Stardust video - <https://www.youtube.com/watch?v=FqoAxWAo1gc>

# South Sefton re-use shop gets a new lease of life

## Re-use shop re-opens...with another on the way

The Re-use shop at South Sefton Recycling Centre has re-opened with a new operator.

The shop was originally run by YMCA under a trial period, where approximately 20 tonnes of materials were re-used. That trial has ended and the shop is now under the stewardship of local charity Emmaus, who have been operating it for three months. Sales and tonnages of re-used material are increasing, with tonnages of 0.79 tonnes in August and 1.36 tonnes in September.

In another boost to re-use and waste prevention, a similar shop at Old Swan Recycling Centre is currently being set up with Emmaus at the helm. To begin with the shop will operate as a hub meaning Emmaus will accept material for re-use which will then be sold at their superstore in Seaforth.

It is envisaged the hub will operate for a couple of months with the intention of running it as a full re-use shop after a trial period has ended.



---

## Phones get smart for food waste

### New smartphone app promises to help cut food waste

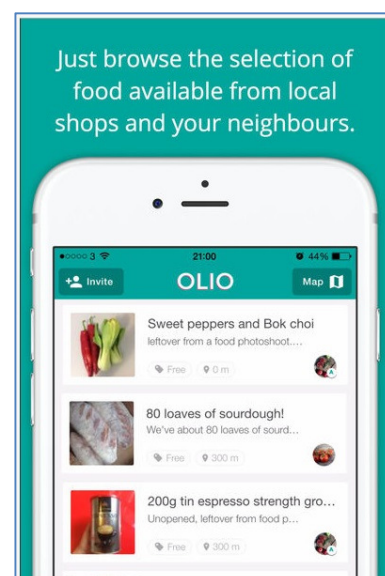
If you're looking to reduce the amount of food you're throwing away then a new smartphone app might be for you.

The Olio App connects neighbours with each other and with local independent shops to share surplus food. This could include food nearing its sell-by-date from shops, cafes and markets, spare vegetables from an allotment, cakes from a baker or groceries from household fridges.

#### How does it work?

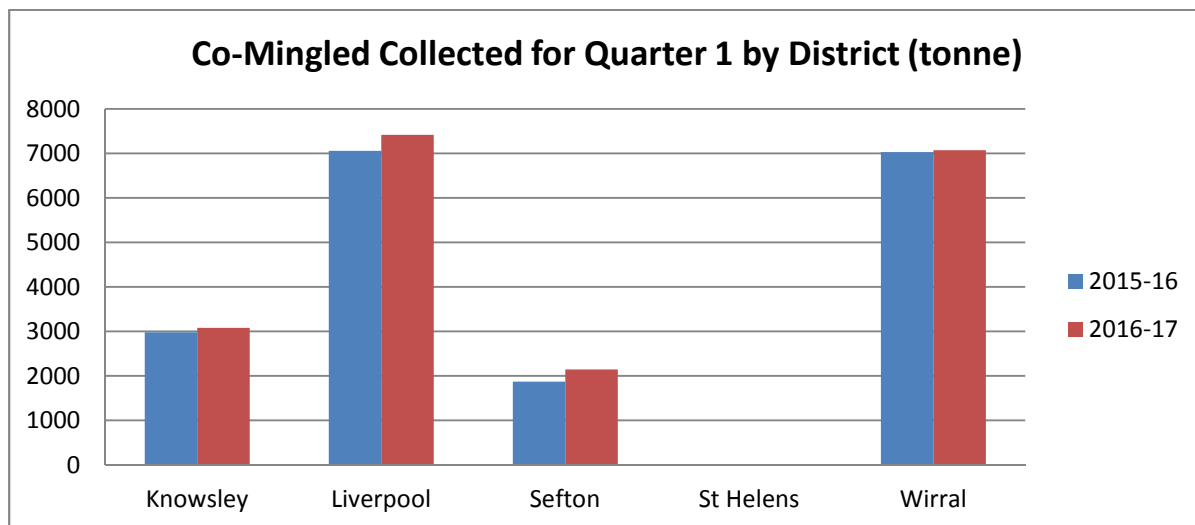
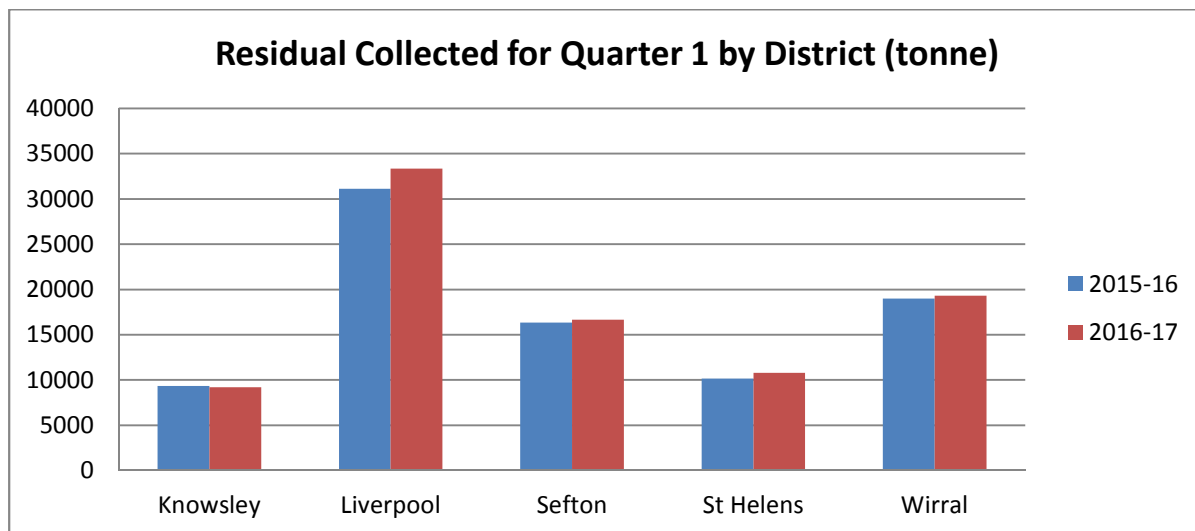
Once you've downloaded the app, simply take a picture of the items and add them to OLIO for a neighbour to collect, be it from home, the store, an OLIO Drop Box, or another agreed location.

Find out more and download the free app at [www.olioex.com](http://www.olioex.com)



# Quarter Waste Statistics by Merseyside District

Knowsley, Liverpool, Sefton and Wirral continue to deliver residual (i.e. black bin bag) waste and Co-mingled (i.e. recycled) materials to the Authority under the Waste Management and Recycling Contract, whilst St Helens deliver residual Waste only.



## CONTACT

Merseyside Recycling and Waste Authority  
7<sup>th</sup> Floor, No. 1 Mann Island  
Liverpool  
L3 1BP

Tel: 0151 255 1444

Email: [enquiries@merseysidewda.gov.uk](mailto:enquiries@merseysidewda.gov.uk)  
[www.merseysidewda.gov.uk](http://www.merseysidewda.gov.uk)  
[www.twitter.com/merseysiderwa](https://www.twitter.com/merseysiderwa)  
[www.facebook.com/merseysiderwa](https://www.facebook.com/merseysiderwa)