

Annex Documents



June 2005

The Merseyside Waste Partnership

MWDA Version 2: June 2005

Annex Documents

Annex A	MWDA and Merseyside Waste Partnership Key Facts	Page 4
Annex B	Current Waste Facility Build Programmes	Page 8
Annex C	Re-Use Action Plan	Page 16
Annex D	Waste Minimisation Action Plan	Page 17
Annex E	Current Assets	Page 21
Annex F	Funding Secured by the Merseyside Waste Partnership	Page 23
Annex G	District Collections	Page 25
Annex H	Tonnages of Recyclables collected by District	Page 27
Annex I	Provisional Results of the Public Consultation Exercise	Page 28
Annex J	Glossary	Page 30
Annex K	Public Consultation Questionnaire 2005	Page 36

ANNEX A: MWDA and Merseyside Waste Partnership Key Facts

A1. Key Facts - MWDA

Merseyside Waste Disposal Authority

Address: 6th Floor, North House, 17 North John Street, Liverpool, L2 5QY

Telephone: 0151 255 1444

Fax: 0151 227 1848

Email: enquiries@merseysidewda.gov.uk

Website: www.merseysidewda.gov.uk

A2. Councillors - MWDA

The Authority consists of nine Members representing the five Merseyside Metropolitan District Councils as follows:

Knowsley	(1 Councillor)
Liverpool	(3 Councillors)
St.Helens	(1 Councillor)
Sefton	(2 Councillors)
Wirral	(2 Councillors)

The number of Councillors representing each District Council was determined under the Local Government Act 1985 and reflects the size of each District

A3. MWDA Senior Officers

Director	Carl Beer
Contracts Manager	John Connell
Support Services Manager	Mandy Valentine
Waste Facilities Manager	Lyn Fairhurst
Waste Strategy Manager	Calvin Stockton

A4. MWDA's role

- Manage the waste collected by the five Merseyside Waste Collection Authorities (WCA's)

- Manage the waste delivered by the Merseyside householders to the Authority's 14 Household Waste Recycling Centres (HWRC's)
- Develop and implement a JMWMS in partnership with the 5 Merseyside District Councils
- Manage the Clean Merseyside Centre Market Development Project
- Undertake Environmental Monitoring, maintenance and restoration of 7 Closed Landfill Sites previously used by the Authority and its predecessors

The Authority's waste management functions are contracted out. The contract for managing the WCA Contract is held by Mersey Waste Holdings Ltd. and runs to 2008. The HWRC Contract is also held by Mersey Waste Holdings Ltd and also runs to 2008. Mersey Waste Holdings Ltd. is a Local Authority Waste Disposal Company (LAWDC) established in 1992 and is wholly owned by the Authority.

A5. Useful Contacts

Clean Merseyside Centre (CMC)

6th Floor, North House, 17 North John Street, Liverpool, L2 5QY
Telephone: 0151 236 1328

Mersey Waste Holdings Ltd.

2nd Floor, Port of Liverpool Building, Pier Head, Liverpool L3 1BY
Telephone: 0151 255 0044

A6. District Information and Profiles

Knowsley Borough Council
Director of Environmental & Operational Services
Stretton Way,
Huyton,
Knowsley,
L36 6JF
Tel: (0151) 443 2400
customer.services.kcs@knowsley.gov.uk
www.knowsley.gov.uk

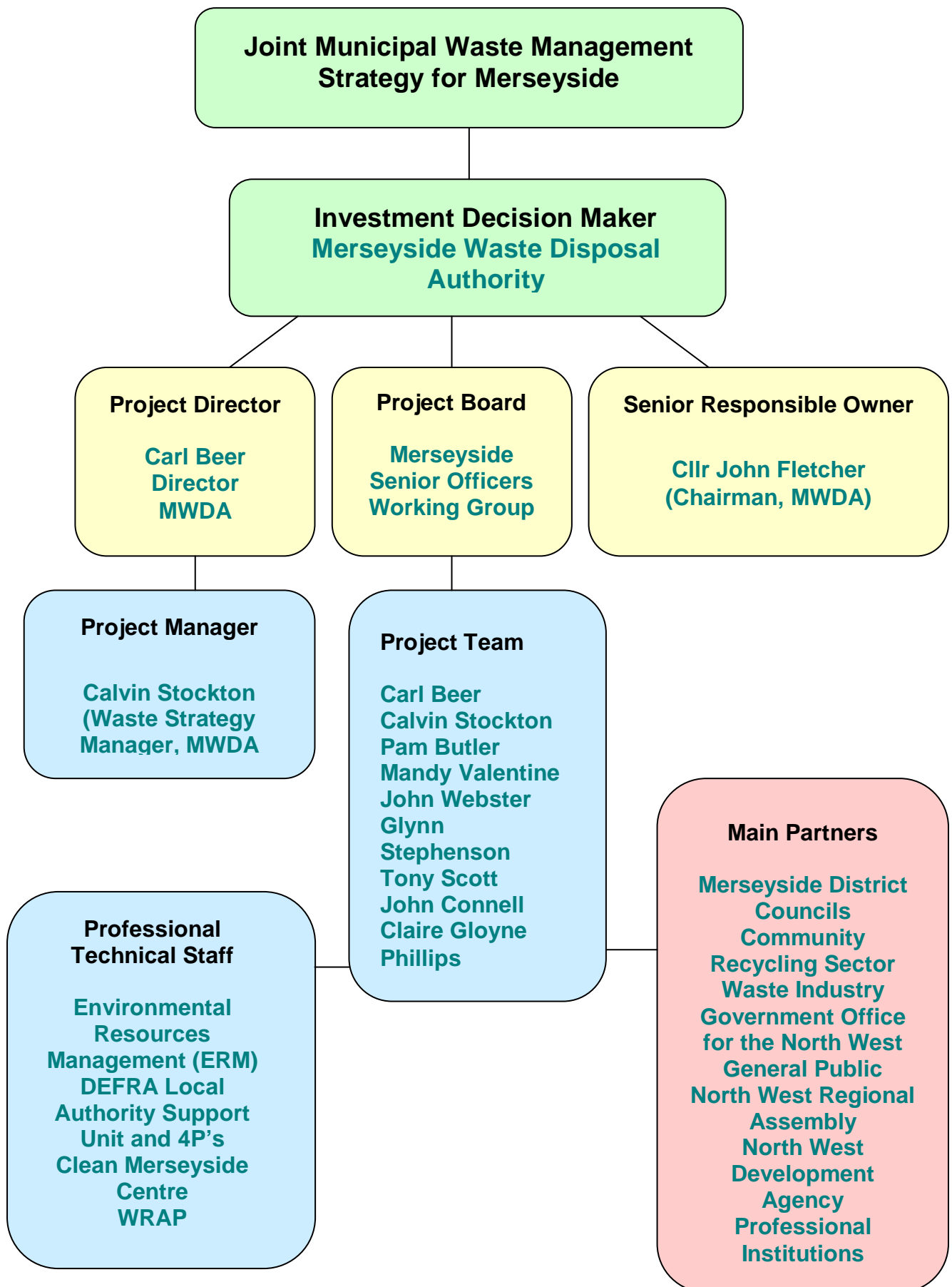
Liverpool City Council
Municipal Buildings
Dale St
Liverpool
L69 2DH
(0)151 233 3000
liverpool.direct@liverpool.gov.uk
www.liverpool.gov.uk

Sefton Council
Environmental Protection
Balliol House,
Balliol Road,
Bootle L20 3AH
Tel: 0845 140 0845
epd@environmental.sefton.gov.uk
www.sefton.gov.uk

St.Helens Council
Hardshaw Brook Depot
Parr Street
Parr
St. Helens
WA9 1JR
Telephone: 01744 456789
Contactcentre@sthelens.gov.uk
www.sthelens.gov.uk

Wirral MBC
Town Hall
Brighton Street
Wallasey
Wirral
CH44 8ED
0151 606 2000
Comments@wirral.gov.uk
www.wirral.gov.uk

A9. Waste Strategy Project Management Structure



ANNEX B: Current Waste Facility Build Programmes

B1. MWDA Current Waste Management Facility Build and Site Improvement Programme

OBJECTIVES (from MWDA Service Plan)	KEY PROJECTS	PRIORITY	DISTRICT	DELIVERABLES	PROGRESS
To provide services and facilities which directly contribute to the implementation of the JMWMS for Merseyside	South Sefton Recycling Park (HWRC and Bulking Station)	High	Sefton	To deliver an additional HWRC for Sefton together with Bulking Station to service kerbside collection and community recycling	HWRC Fully Operational 2005 Bulking Station under final options development
	Additional HWRC's Liverpool	High	Liverpool	To deliver 1 no. additional HWRC in North Liverpool 2005/06 To deliver 1 no. additional HWRC in Liverpool 2006/07 To provide additional recycling facilities for public use To improve recycling performance	Currently at site selection stage

	Bidston Moss Integrated Waste Management Facility	High	Wirral	<p>To provide a Waste Transfer Station to serve Wirral by August 2005</p> <p>To provide a Materials Recycling Facility capable of processing 30,000 tonnes/year by March 2006 and support the roll-out of Wirral MBC Kerbside Recycling Service</p> <p>To provide In Vessel composting facilities (IVC) capable of processing 10,400 tonnes/year of household kitchen/green/garden waste by March 2006</p> <p>To provide an Education Visitors Centre by March 2006</p> <p>To provide a replacement HWRC by March 2006</p>	Constriction programmes commenced
	Gilmoss In-Vessel Composting Facility (IVC)	High	Liverpool	To provide IVC facilities capable of handling 15,600 tonnes/year of household kitchen/green garden waste by March 2006	Programme underway

	Replacement HWRC for St.Helens	Medium	St.Helens	Proposals to replace an existing HWRC with an improved HWRC to serve the Borough by 2007/08	Preliminary discussion stage
	DEFRA New Technologies Programme (North West Virtual Centre of Excellence)	Medium	N/A	To contribute towards the diversion targets for biodegradable waste To demonstrate new technologies	Preliminary discussion phase with North West Development agency and DEFRA
To optimise waste reduction in line with the emerging JMWMS	Implementation of HWRC Best Practice regarding waste minimisation	Medium	All Districts	To implement fixed height barriers and Permit Scheme at all HWRC's by July 2005	Being implemented
	Implementation of WRAP Green Waste Project at HWRC's	High	St.Helens HWRC's (Best Practice to be rolled out to all HWRC's)	To compost an additional 2,400 tones of green waste (above 2003 levels) from St.Helens HWRC's by April 2006 To roll-out best practice techniques to all HWRC's	Project underway
To optimise waste recovery where actions higher up the waste hierarchy are not practicable and in-line with the JMWMS	Bidston Methane Ltd Commercial Gas Extraction for Power Generation from Closed Landfill Sites	Medium	Bidston Moss Closed Landfill Site – Wirral and Billinge hill Quarry Closed Landfill Site – St.Helens	To continue to commercially extract landfill gas from closed landfill sites for power generation To assess cost/income generation assessment of remaining commercial capacity Assessments of post commercial infrastructure options and requirements of	Gas extraction for power generation continuing generating electricity for the National Grid at both sites

				continued active gas extraction Implement appropriate strategic consultation with Planning Authorities regarding planning and other statutory obligations	
To manage sites and facilities in a safe and environmentally responsible manner	Environmental Management	Medium	All Districts	To ensure the Authorities statutory and legal obligations are met To improve Corporate social responsibility performance	On-Going
	Billing Hill Quarry Closed Landfill Site	Low	St.Helens	To complete site capping works To restore and landscape the site to comply with planning conditions To obtain lease and planning approvals to secure long term access to the site	Site capping works underway

	Red Quarry Closed Landfill Site	Low	St.Helens	<p>To investigate the potential to develop the long term management of the site within the Forestry Commission Newlands Programme.</p> <p>To complete restoration of the site to a community woodland and open the site as a public open space, in line with planning conditions.</p>	Commencing preliminary discussion with Forestry Commission and St.Helens MBC
	Bidston Moss Closed Landfill Site	Low	Wirral	<p>Development of an appropriate long term management structure to manage the site within the Forestry Commission Newlands Delivery Programme by June 2005</p> <p>For the site to be locally managed in the interests of public enjoyment, community education and landscape enhancement.</p> <p>To develop and finalise an appropriate land transfer Agreement and Lease between MWDA and the Forestry Commission to manage the Community Woodland by April 2005</p>	Programme currently being implemented

ANNEX C: Re-Use Action Plan

C1. Re-use Action Plan

Objectives	Actions
Evaluate reuse diversion rate	<ul style="list-style-type: none"> • Gather list of reuse companies in Merseyside • Establish tonnage rates for diversion • Evaluate data
Consider cost benefit of reuse support policy	<ul style="list-style-type: none"> • From evidence above provide recommendations for reuse support policy
Encourage further reuse projects	<ul style="list-style-type: none"> • Seek to establish additional reuse projects • Focus efforts on community groups
Encourage further repair projects	<ul style="list-style-type: none"> • Undertake risk assessment in respect of suitable items for repair (e.g. technology/skills) • Encourage companies that collect unwanted items to diversify into repair and sell/give away
Create a culture of responsibility	<ul style="list-style-type: none"> • Raise awareness that waste is the responsibility of all residents • Educate the public in the message of waste responsibility • Make the public aware that the purchasing decisions that they make are directly waste related.

ANNEX D: WASTE MINIMISATION ACTION PLAN

D1. Waste Minimisation Action Plan – Main Deliverables

Current Projects	Activities and Actions	Priority (terms) 3 – short 2 – med 1 – long	Action by
1. Home composting	To support the Merseyside District Councils in the distribution of composting bins across Merseyside	3	District
	To support the Merseyside District Councils in promoting households with gardens to be home composting kitchen and garden	3	District WDA
	To support the Merseyside District Councils in establishing a programme of training for compost companions	3	District WDA
2. Community composting	MWDA and the Merseyside District Councils will continue to support community composting groups	3	District WDA
	MWDA and the Merseyside District Councils will seek to support community groups wishing to become involved in composting	2	District WDA
3. Real Nappies	MWDA and the Merseyside District Councils to formally constitute the Merseyside 'Real Nappy' Network (MRNN)	3	District WDA
	MWDA and the Merseyside District Councils to implement real nappy awareness programme	3	District WDA
	Distribute copies of the 'The Natural Choice' promotion CD and video	3	District WDA
	Continue to raise awareness with maternity ward managers in Merseyside with the aim of having real nappy promotional media in all hospitals, surgeries and health clinic	3	District WDA

Current Projects (Continued)	Activities and Actions	Priority (terms) 3 - short 2 - med 1 - long	Action by
	Arrange awareness events (media releases, nappy mornings) to take place during the national Real Nappy Awareness Week	3	Districts WDA
	1 public/private nursery to be using real nappies	2	Districts WDA
	1 maternity ward to have introduced real nappy use	2	Districts WDA
	1 SureStart to have implemented a full nappy service (inclusive of laundry, supplies, and drop in shop)	2	Districts WDA
4. Community sector	MWDA and the Merseyside District Councils to continue to support and further encourage the activities of the Merseyside Community Recycling Forum	2	Districts WDA
	MWDA to provide pump priming fund for the community sector	3	WDA
5. Household Waste and Recycling Centres	Support where necessary, operational procedures at HWRCs including personnel and customer relations practices, segregation of waste and effective exclusion of trade waste	3	WDA
6. Residual waste	Promote focused waste minimisation source segregated collection and restriction of residual waste (e.g. alternate weekly collection) and limiting residual waste containers	3	Districts WDA

New Initiatives	Activities and Actions	Priority (terms) 3 – short 2 – med 1 - long	Action by
7. Education and awareness	Through the overall Joint Municipal Waste Management Strategy (JMWMS) for Merseyside Education and Awareness Programme, develop and support Merseyside wide waste minimisation programmes.	3	Districts WDA
	Undertake junk mail reduction campaign	2	WDA
8. Waste minimisation in schools	Undertake waste audit pilot study for schools	3	Districts WDA
	Look at the options of developing waste minimisation education pack for schools	2	Districts WDA
	Support the Merseyside District Councils in developing a waste audit tool kit for all schools	1	Districts WDA
9. Waste minimisation web pages/site	Merseyside District Councils to develop waste minimisation information and resource pages within their own web site	3	Districts
10. Authority waste auditing	Support Merseyside District Councils in undertaking office waste audits	3	Districts WDA
	Support Merseyside District Councils in implementing green procurement policies	3	Districts WDA
	Support Merseyside District Councils in promoting either Environmental Management Systems or Corporate Social Responsibility reporting	3	Districts WDA
11. Packaging	Support local retail businesses to reduce packaging. Review developments between Waste Resources Action Programme (WRAP) and major retailers	2	Districts WDA

New Initiatives	Activities and Actions	Priority (terms) 3 – short 2 – med 1 - long	Action by
12. Clinical waste	Devise education programme for health professionals and persons treating themselves at home	3	WDA
13. Reuse	Evaluate the diversion rate for reused products, equipment and materials	3	WDA
	Focus efforts on community groups and projects	2	Districts WDA
14. Review waste minimisation and re-use strategy	The strategy will be reviewed on an annual basis and alignment within the overall JMWMS review programme	3	WDA

ANNEX E: Current Assets

E1. Current Assets operated on behalf of Merseyside Waste Disposal Authority

Household Waste Recycling Centres (HWRC's)

Liverpool

Otterspool Waste Recycling Centre, Jericho Lane, Aigburth. Liverpool

Sefton

- South Sefton Recycling Centre, Irlam Road, Bootle, Sefton
- Sefton Meadows Waste Recycling Centre, Sefton Lane, Maghull. Sefton
- Southport Waste Recycling Centre, Foul Lane, Southport. Sefton
- Formby Waste Recycling Centre, Altcar Road, Formby. Sefton

Wirral

- Bidston Moss Waste Recycling Centre, Wallasey Bridge Road, Wirral
- Clatterbridge Waste Recycling Centre, Mount Road, Bebington, Wirral
- West Kirby Waste Recycling Centre, Greenbank Road, West Kirby, Wirral

Knowsley

- Huyton Waste Recycling Centre, Ellis Ashton Street, Huyton, Knowsley
- Kirkby Waste Recycling Centre, Depot Road, Kirkby Industrial Estate, Knowlsey

St Helens

- Newton-le-Willows Waste Recycling Centre, Junction Lane, Newton-le-Willows. St Helens
- Ravenhead Waste Recycling Centre, Burtonhead Road, St Helens
- Rainhill Waste Recycling Centre, Tasker Terrace, Rainhill. St Helens

- Rainford Waste Recycling Centre, Southern Lane, Rainford. St Helens

Waste Transfer Stations

- Gillmoss WTS, Stonebridge Lane, Liverpool
- Huyton WTS, Ellis Ashton Street, Huyton, Knowsley
- Southport WTS, Foul Lane, Southport., Sefton

ANNEX F: Funding Secured by the Merseyside Waste Partnership

Funding Source	Funding Secured	Projects	Dates
DEFRA National Waste Minimisation and Recycling Fund	£5,800,000	<ul style="list-style-type: none"> • Integrated Waste Management Facility at Bidston, Wirral • In-vessel composting facility at Gillmoss, Liverpool • Provision of a new HWRC in Sefton • District kerbside systems. • Re-usable Nappy Scheme - promotional CD • Recycling awareness raising campaign across Merseyside 	2003/2006
DEFRA Waste Implementation Programme	£76,000	<ul style="list-style-type: none"> • Awareness raising campaign for the Intergrated Waste Management • Facility at Bidston, Wirral and In-vessel composting facility at Gillmoss, Liverpool 	2005/06
DEFRA Regional Support Funding	£50,000	<ul style="list-style-type: none"> • Establishment of a North West Remade market development project. Scoping study and business plan production 	2004/05
Waste Resources Action Programme (WRAP)	£32,417	<ul style="list-style-type: none"> • Awareness raising campaign for the Intergrated Waste Management Facility at Bidston, Wirral and In-vessel composting facility at Gillmoss, Liverpool. 	2005/06
(WRAP) Local Authority Grant Scheme	£49,400	<ul style="list-style-type: none"> • Green Waste Awareness Raising Project at Civic Amenity Sites - 	2004/05

WRAP ROTATE (Recycling and Organics Technical Advisory Team) Programme	In-kind	<ul style="list-style-type: none"> • Consultancy Support for Merseyside District Councils in roll-out of Kerbside Collection Systems 	2003/2006
European Regional Development Fund Objective One/Landfill tax (CMC) Public Funds	£2,300,000	<ul style="list-style-type: none"> • Funding for the operation of the Clean Merseyside Centre (CMC) a market development initiative to identify new markets for recyclables 	1999/2006

ANNEX G: District Collections

RECYCLING					Bring sites	HWRC	Residual	
District	No. of households collected from	Frequency of collection	Container type	Materials collected	No of sites	No of sites	Frequency of collection	Container type
KNOWSLEY	61,000 60,000	Fortnightly – All Year Fortnightly – Apr - Oct	Box (40-60L) Bin	Paper, glass, cans , textiles Garden waste	49	2	Weekly	Wheeled bin
LIVERPOOL	185,000	Fortnightly	Box (40-60L)	Paper, glass, cans , textiles Garden Waste	275	1	Weekly	Wheeled bin

SEFTON	100%	Weekly	Box (40-60L)	Paper, glass, cans, textiles	43	4	Weekly	Plastic sack
	37%	Weekly	Plastic sacks	Garden Waste				
ST HELENS	76,000	Fortnightly	Box (40-60L)	Paper, glass, cans , textiles	64	4	Weekly	Wheeled bin
	26,000	Fortnightly	Wheeled Bin	Garden Waste				
WIRRAL	15,000	2 weekly	Box (40-60L)	Paper, glass, cans , textiles	24	3	Weekly	Wheeled bin
	127,000	2 weekly	Blue Bag	Paper				
	90,000	2 weekly	Garden Bag	Garden Waste				

ANNEX H: Tonnages of Recyclables collected by District

District	Collection Type	Paper	Textiles	Plastics	Metals	Glass	White Goods	Green Waste	Totals
Knowsley	Kerbside	2,400	0	0	3	100	200	900	3,603
	Bring sites	320	35	0	20	250			625
Liverpool	Kerbside	4,825	408	0.6	396	2,383	572	0	8,584.6
	Bring sites	1,276	22	0	58	863	0		2,219
Sefton	Kerbside and bring sites	2199	290	0	500	4270		2175	9,434
St Helens	Kerbside	3798	82	0	287	1338		5117	10,622
	Bring sites	287	7		15	345			654
Wirral	Kerbside						794	2,769	3,563
	Bring sites	7,298	160	325	102	1,951			9,836

ANNEX I: Provisional Results of the Public Consultation Exercise

<p>Question 1</p>	<p>Recycling - Should we aim to recycle at least 40% of our waste?</p>	<p>Overall 89.2% asked strongly agreed</p>
<p>Question 1b</p>	<p>How would you recycle? If you strongly agree/agree would you be prepared to:</p> <ul style="list-style-type: none"> • Reduce the amount of rubbish you create? • Compost grass, hedge clippings, vegetable peelings in your garden? • Separate out your recycling from your refuse so it can be picked up at kerbside? • Separate and take recyclables to a HWRC, bottle bank etc? 	<p>83.2% said yes</p> <p>64.6% said yes</p> <p>94.0% said yes</p> <p>50.0% said yes</p>
<p>Question 3</p>	<p>Waste Disposal Options - Please rank each option from 1 to 4, with 1 being favourite and 4 being least favourite of the following options:</p> <ul style="list-style-type: none"> • Option 1 40% recycling 50% mass burn incineration 10% landfill • Option 2 	<p>Favourite 18.8%</p> <p>Least favourite 34.0%</p> <p>Favourite 46.1%</p>

	<p>40% recycling 50% MBT for energy recovery 10% landfill</p> <ul style="list-style-type: none"> • Option 3 40% recycling 50% MBT for compost 10% landfill • Option 4 40% recycling 50% anaerobic digestion 10% landfill 	<p>Least favourite 8.9%</p> <p>Favourite 16.9%</p> <p>Least favourite 23.6%</p> <p>Favourite 21.1%</p> <p>Least favourite 32.6%</p>
<p>Question 3</p>	<p>Would you object if a facility were to be built within 500 metres (third of a mile) of your house?</p> <ul style="list-style-type: none"> • Recycling facility • MBT • EfW • Landfill 	<p>Yes 40.4%</p> <p>No 59.6%</p> <p>Yes 60.1%</p> <p>No 39.9%</p> <p>Yes 61.8%</p> <p>No 38.2%</p> <p>Yes 84.1%</p> <p>No 15.9%</p>

ANNEX J: Glossary

Glossary of terms

Anaerobic digestion	Anaerobic digestion is undertaken in conditions that encourage the natural breakdown of organic matter by bacteria in the absence of air. The process generates a biogas that is rich in methane and carbon dioxide, and that can be used as a source of renewable energy to meet on-site power and process heat requirements.
Autoclaving	Autoclaving sterilises residual waste through the application of high temperature steam and ‘cooks’ biodegradable material to produce a biomass fibre. This is a treatment technology rather than disposal, producing residues that must be managed at other facilities. The process cleans metals and aids separation of plastics and heavy fractions to assist recycling. The fibre material may find use as a secondary material, particularly in building products and packaging, or may be used as a fuel for co-firing.
B.P.E.O.	Best Practicable Environmental Option. Provides the most benefits or least damage to the environment as a whole, at an acceptable cost in the long-term as well as in the short-term.
Biodegradable Municipal waste	Any waste that is capable of undergoing anaerobic or aerobic decomposition, such as garden waste kitchen waste, paper and cardboard.
Bring Site	Collection point for the public to place items for recycling
Clinical Waste	Healthcare waste such as blood, tissues, needles, soiled dressings, drugs, etc, which is infectious or could cause harm in some way.
Commercial waste	Waste arising from premises used wholly or mainly for trade, business, sport, recreation or entertainment, excluding

	municipal and industrial waste.
Compostable material	Any material collected that can be composted either in windrows, in IVC or at home. This includes, green garden waste and kitchen waste.
Composting: Windrow	Shredded green waste is placed in outdoors in elongated heaps called windrows. They require aeration and so some form of mechanical turning is required.
Dry recyclables	Material collected for recycling which does not include compostable material. Includes, paper, cans, glass, cardboard, plastic etc.
European Union Directive	A European Union legal instruction, binding on all Member States, but which must be implemented through national legislation within a prescribed timescale.
EU Landfill Directive	Adopted by Member States during 1999 and was intended to reduce the environmental effect of the landfilling of waste by introducing uniform standards. The Directive requires the UK to reduce the proportion of biodegradable municipal waste going to landfill by 35% of the 1995 level by 2020.
Energy Recovery	The recovery of useful energy in the form of heat and/or power from burning waste.
Energy from Waste	There are a number of EfW technologies available. These methods include moving grate, fluidised bed, and rotary kiln incineration, pyrolysis and gasification. All of these technologies are designed to generate power, and often heat, through the combustion of waste or a synthetic fuel.
Green Waste	Waste from gardens which is compostable.
Composting: Home	Compost can be made at home using a traditional compost heap, a purpose designed container (bin), or a wormery.
Household waste	Includes domestic waste from household collection rounds, waste from services such as street sweepings, bulky waste collection, litter collection and garden waste collection, waste from HWRC's and wastes separately collected for recycling.
HWRC	Household Waste Recycling Centre – sites where the public may deposit

	recyclables and general household waste.
Inter-Authority Agreement (IAA)	The IAA provide details on the responsibilities of all partners leading to a formally binding relationship and will significantly aid the long-term delivery of the JMWMS, whilst recognising the ambitions and aims of individual partners.
In-vessel composting (IVC)	Shredded waste is placed inside a chamber through which air is forced. This method allows good control of temperature, moisture and aeration, which leads to rapid composting. A period outdoors is need for the compost to mature. This type of facility can also deal with kitchen waste.
Kerbside recycling	Collection of recyclable or compostable wastes usually from the pavement, outside premises, including collection from commercial or industrial premises as well as from households.
Kitchen waste	Waste from the kitchen which is compostable ie food waste.
Landfill tax	Government tax imposed on waste that is sent for landfill
Landfill	The controlled deposit of waste to land in a way that controls the risk of pollution or harm to humans and/or the environment.
Levy	The services provided by MWDA are paid for by the District Councils of Merseyside through the levy which is calculated on a prescribed allocation method.
Materials Recovery Facility (MRF)	A facility at which materials are separated manually or mechanically, from mixed waste streams (e.g. paper, glass, plastic) and baled and stored for reprocessing.
Mechanical/Biological Treatment	MBT systems involve a combination of the mechanical sorting of materials for recycling and the biological treatment of biodegradable material in residual waste. It is a treatment technology rather than disposal, producing residues that must be managed at other facilities.
Memorandum of Understanding (MoU)	Is a document which was drawn up to provides the next step in the development of closer partnership working.
Municipal Solid Waste	Household and other wastes collected by a waste collection authority or its contractors, such as municipal parks and garden waste, beach cleansing waste

	and any commercial and industrial waste for which the collection authority takes responsibility.
Producer responsibility	Requires industry and commerce involved in the manufacture, distribution and sale of particular goods to take a greater responsibility for the disposal and/or recovery of those goods at the end of their useful life.
Proximity principal	The proximity principal (as applied to wastes) is that they should be treated or disposed of as near to their place of origin as possible so as to minimise the distance they are moved.
Recovery	Incorporates recycling, composting and also the recovery of heat, electric power and other forms of energy from waste.
Recycling	Reclaiming and reprocessing materials to use as alternatives to primary raw materials
Recyclables	Are materials that can be readily put through the recycling process
Residual waste	Any waste that isn't collected for recycling or composting.
Reuse	Using materials or products again, for the same or as different purpose, without material reprocessing (e.g. returned milk bottles).
Strategic Environmental Assessment (SEA)	Process for identifying, predicting, reporting and mitigating the environmental impacts of plans
Stakeholders	Persons, organisations or groups with a vested interest
Sustainable development	Is defined as meeting the needs of the present without compromising the ability of future generations to meet their own needs.
Sustainable Waste Management	To manage waste with regard to the environment, social well-being and economics
Treatment	Involves the chemical or biological processing of certain types of waste for the purpose of rendering them harmless, reducing volumes before landfilling, or recycling certain wastes.
Waste	Is defined as any substance or object that the producer, or the person in possession of it, discards, or intends to discard.
Waste arisings	The amount of waste generated in a

	given locality or over a given period of time.
Waste Collection Authority	A local authority (District, Borough or Unitary) responsible for the collection of household waste in its area.
Waste Disposal Authority	A local authority (County, Unitary) responsible for the management of the waste collected and delivered to it by constituent collection authority.
Waste hierarchy	Preferred options for the treatment of waste <ul style="list-style-type: none"> • Minimisation • Reuse • Recycling and Composting • Recovery • Disposal
Waste Local Development Document (WLDD)	This is a planning framework document which will cover the Merseyside region and will take account of municipal waste streams as well as commercial and industrial.
Waste minimisation	Action to reduce the amount of waste. It includes designing out waste; cutting down on packaging; repair and reuse, using less.
Waste Transfer Station (WTS)	A site to which waste is delivered for sorting prior to transfer to another place for reuse, recycling, treatment or disposal.

ANNEX K: Public Consultation Questionnaire